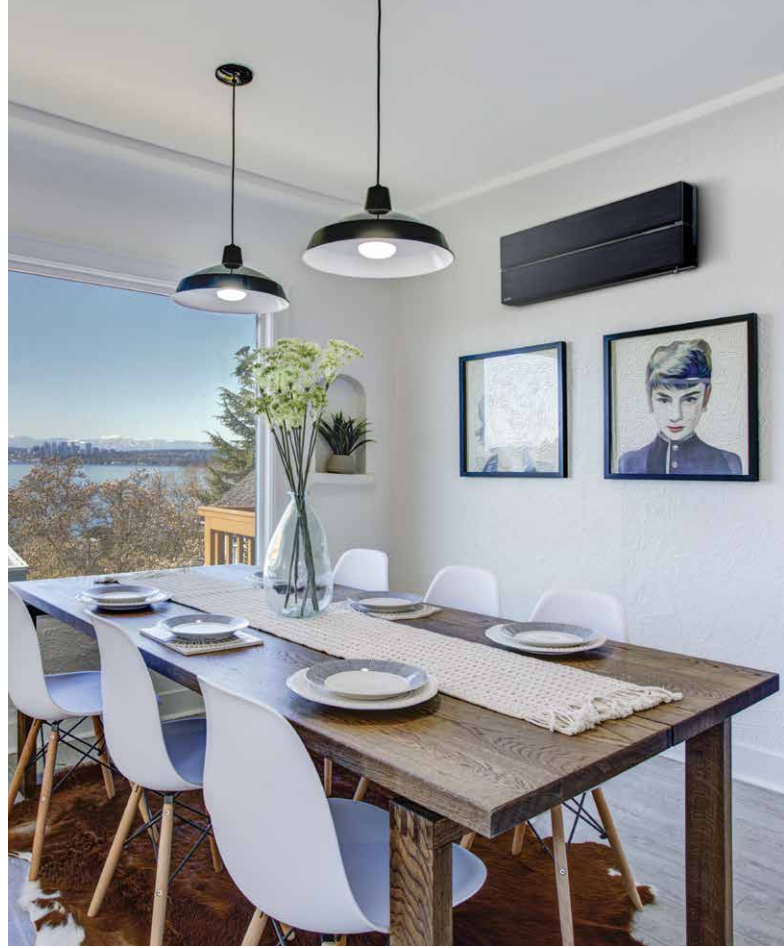




Multi Split Systems

MXZ & PUMY Series





Changes for the Better

Mitsubishi Electric has been an integral part of Australian households for more than 45 years, providing high-quality, innovative products.

We pride ourselves on understanding Australian households and delivering products tailored to meet their needs.

MITSUBISHI ELECTRIC
#worksforME



Contents

Changes for the Better	2	Indoor Unit Compatibility	20
Why ME	4	Selection	21
Why Multi Split	5	Control your Comfort	22
Benefits of Multi Split	6	Zone Controller	24
Technology	7	3D i-see Sensor	25
Indoor Units	8	Product Specifications	26
Outdoor Units	18	Optional Parts	32

Why Choose Mitsubishi Electric?

Whether it is consistent heating or cooling for the home or office, Mitsubishi Electric offers you state-of-the-art technology in the LN and AP Series with Dual Barrier Coating that is quiet, simple to use, energy efficient, and above all, reliable.

Quality & Reliability

When it comes to comfort, efficiency and durability, Mitsubishi Electric is distinctive, and in a very good way. We call it MEQ – Mitsubishi Electric Quality. The MEQ standard results in product tested in accordance with the Mitsubishi Electric standard, it's simply a different standard of testing. Every Mitsubishi Electric air conditioner for each production line, is placed on a testing rig and undergoes a variety of stringent tests before leaving the factory.

Flexible Choice

Mitsubishi Electric air conditioners range from wall mounted, floor standing, ceiling concealed, ceiling cassettes to ceiling suspended units; offering end-users flexibility, with a wide range of options to satisfy most application requirements.

After Sales Service & Spare Parts

We pride ourselves on our local after sales support, including in-house technical support and spare parts support.

Peace of Mind

Mitsubishi Electric air conditioners deliver reliable performance year in, year out. When used in residential applications, Mitsubishi Electric air conditioners are covered by a full 5 year parts and labour warranty.



Why Multi Split?

The Total Home Solution

The ideal cooling/heating solution for each room with just a single outdoor unit.

A Multi Split System gives you the freedom to select the indoor model best suited to each room in your home and caters to your comfort without cluttering the exterior. Enhancing aesthetics by reducing the number of outdoor units required.

With Mitsubishi Electric Air Conditioning Technology, you also get the benefit of enhanced efficiency and energy savings.

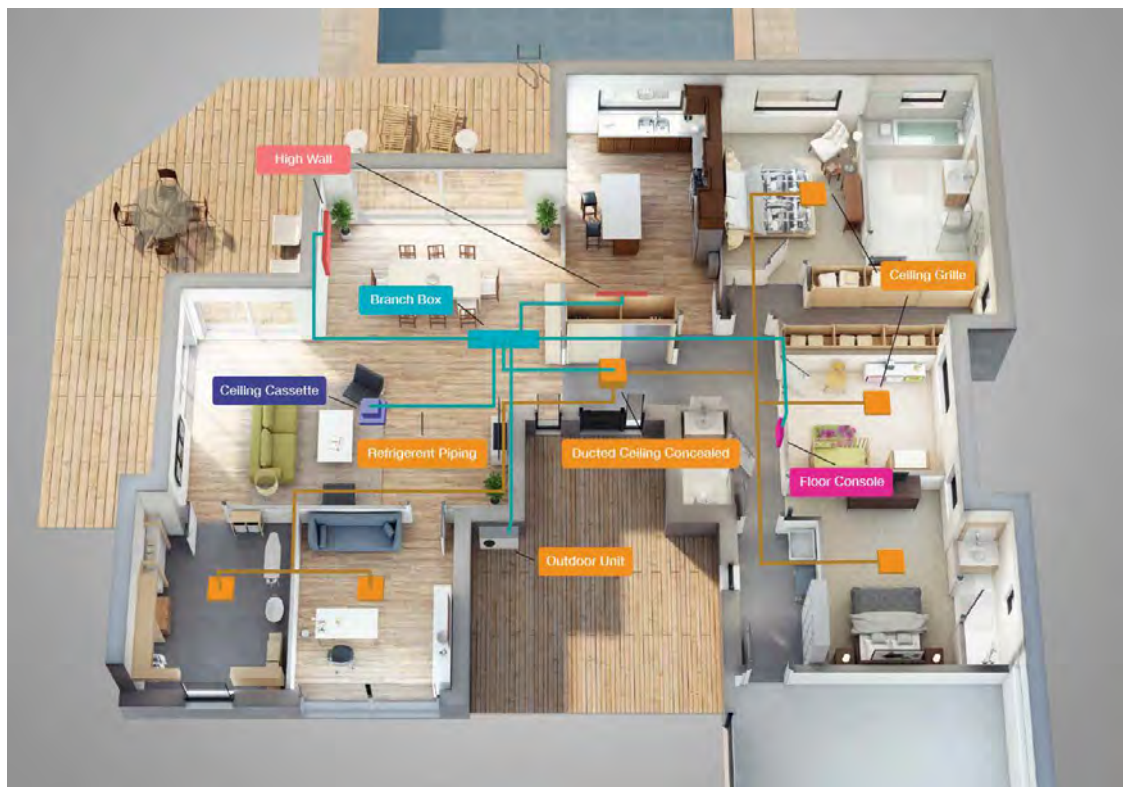


Illustration for product combinations and positioning ideas only.

- ✔ Only one outdoor unit
- ✔ Choose from High Walls, Floor Consoles, Ducted or Cassettes
- ✔ Energy efficient
- ✔ From 2 to 8 room solutions
- ✔ Optional Wi-Fi Control
- ✔ Optional Zone Control (Ducted indoors only)

Benefits of Multi Split

Style for Each and Every Room

A Multi Split System is the perfect addition to any home, giving home owners the opportunity to select multiple indoor air conditioner models, with a different model in each room. The ability to incorporate a range of models within a single Multi Split System, ensures that the functional and aesthetic requirements of each room can be fulfilled. With a Multi Split System you have the flexibility of selecting a compact bulkhead unit for the kitchen, a ceiling cassette unit for the lounge room and a floor standing unit in the office. The flexibility of the Multi Split System is sure to enhance the functionality of your home, as well as its aesthetic appeal.

Individual Temperature Control for Each Room

The capability of a Multi Split System lies in the capacity to individually control the temperature of all air conditioner units, even if a combination of different models have been used. Individual air conditioner control allows occupants in different rooms to select a temperature (within the same mode) that suits their needs, without affecting the temperature settings in other rooms. The capacity to individually control each air conditioner unit may also result in savings on your electricity bill, with the ability to turn a single air conditioner unit off when it isn't required.

Quiet Operation for Peaceful Comfort

Thanks to a clever Silent Mode feature, Multi Split Systems are able to operate whilst keeping noise to the minimum. Whilst in operation, the sound levels of outdoor units can remain as low as 46dBA*, which will greatly please both you and your neighbours.

*MXZ-2F52VGD-A1 / MXZ-3F54VGD-A1 in cooling mode. Measured in an Anechoic chamber.

Keep Your Exterior Clutter-Free

Multi Split Systems are conveniently designed to keep the exterior of your home clutter-free, with the ability to connect multiple (2-8) indoor air conditioning units to a single outdoor unit. Gone are the days where an outdoor unit is required for every indoor unit. With a Multi Split System, you can air condition two to eight rooms with a single outdoor unit, which not only keeps the exterior of your home clutter-free, but also keeps noise to the minimum.

Future-Proof & Add Units as Your Family Grows

As your circumstances evolve, your air conditioning needs may also change. A large benefit of installing a Multi Split System is that additional indoor units can easily be added in the future, without having to install additional outdoor units. For instance, a five room Multi Split System may be installed, with only three rooms connected initially. Two more rooms may then be connected in the future, to the existing outdoor unit. Therefore, Multi Split Systems are future-proof, allowing you to plan for present circumstances, but also allow for changes to occur in the future.



Technology

Outdoor Units

With Mitsubishi Electric Multi Split Systems, climate control is available at the touch of a button. Our units are ideal for multiple room applications and can incorporate zone control ducted indoor units for complete control where cool or warm air is moved quietly throughout the home through diffusers positioned in the ceiling, wall or floor.

Outdoor Unit DC Scroll Compressor

Compressors can be described as the heart of an air conditioner, that pump the refrigerant around the system which heat or cools your home. Mitsubishi Electric utilises DC scroll compressors with the addition of a frame compliance mechanism, this technology reduces the internal friction of the compressor which increases its overall efficiency.

Inverter Technology

While the compressor is the heart of the system, the Inverter is the brain of the system. An Inverter receives information from sensors monitoring operating conditions and adjusts the frequency of the compressor to control the refrigerant flow rate thereby consuming less current and power. Mitsubishi Electric Inverters ensures high performance and maximum comfort is achieved while maintaining energy efficiency.

Cleaning-Free Pipe Re-Use Technology*¹

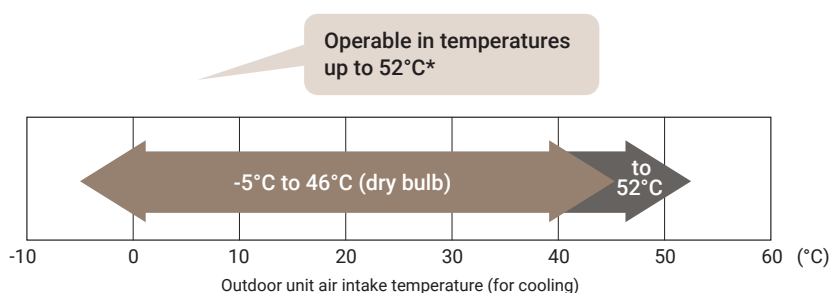
The Mitsubishi Electric clean free piping re-use technology allows the re-use of existing refrigerant pipe*² which may reduce the installation costs by eliminating the need to replace existing pipework. The system is fitted with a 'wide strainer' which captures iron particles and prevents them from entering the outdoor unit.

*¹ Please contact your local dealer for details.

*² This feature is available on all MXZ and PUMY Series.

Guaranteed Operating Range

With the harsh Australian environment it is comforting to know your air conditioner will continue to operate with a guaranteed operating range of -5°C to 46°C/52°C*. This means your air conditioner will continue to operate when you need it most.



*46°C MXZ Series and 52°C PUMY Series.

Demand Response Capable*

Our MXZ and PUMY outdoor units include a demand response enabling device (DRED), allowing your electricity provider to activate and control the system at 3 preprogrammed modes, in response to signals sent from the electricity provider at times when it is necessary to help reduce peak demand.

*Excludes MXZ-2F52VF.

*This requires an additional adapter from your power provider and is installed in accordance with AS/NZS 4755.3.1:2014.

Indoor Units

MSZ-LN Series

- ✔ Built-In Wi-Fi
- ✔ Dual Split Vane Technology
- ✔ 3D i-see Sensor
- ✔ Plasma Quad Plus Filter
- ✔ Quiet 19dBA Noise Level (LN25)
- ✔ Dual Barrier Coating

2.2kW	2.5kW	3.5kW	4.2kW	5.0kW	6.0kW	7.1kW	8.0kW
-	✔	✔	-	✔	-	-	-



MSZ-EF Series

- ✔ Built-In Weekly Timer
- ✔ Nano Platinum Filter
- ✔ Wi-Fi Control*1
- ✔ Quiet 21dBA Noise Level in 'Quiet Mode' (EF22/25/35)
- ✔ Appealing design matches any room décor

2.2kW	2.5kW	3.5kW	4.2kW	5.0kW	6.0kW	7.1kW	8.0kW
✔	✔	✔	✔	✔	-	-	-



MSZ-AP Series

- ✔ Dual Barrier Coating
- ✔ Vertical & Horizontal Vanes
- ✔ Wi-Fi Control*1
- ✔ Quiet 18dBA Noise Level (AP25 in heating mode)
- ✔ Built-In Anti-Allergy Enzyme Filter*2
- ✔ Electrostatic Anti-Allergy Enzyme Filter (Optional)*2

1.5kW	2.0kW	2.2kW	2.5kW	3.5kW	4.2kW	5.0kW	6.0kW*3	7.1kW*3	8.0kW*3
✔	✔	✔	✔	✔	✔	✔	✔	✔	✔



MFXZ-KW Series

- ✔ Simple & Flat Design
- ✔ Nano Platinum Filter
- ✔ Wi-Fi Control*1
- ✔ Multi-Flow Vane (Optimum Air Distribution)
- ✔ Built-In Weekly Timer
- ✔ Built-In Installation Capability

2.2kW	2.5kW	3.5kW	4.2kW	5.0kW	6.0kW	7.1kW	8.0kW
-	✔	✔	-	✔	-	-	-



SLZ-M Series

- ✔ Outside-Air Intake
- ✔ Unit height of only 235mm
- ✔ 3D i-see Sensor (Optional)
- ✔ Compact 2ft x 2ft size for ceiling installation
- ✔ Wi-Fi Control*1

2.2kW	2.5kW	3.5kW	4.2kW	5.0kW	6.0kW	7.1kW	8.0kW
-	✔	✔	-	✔	-	-	-



*1 Optional Wi-Fi adapter required per unit.

*2 Excludes MSZ-AP15-20.

*3 MSZ-AP60-80 are only connectable to MXZ outdoor units.

PLA-M Series

- ✔ 72 Airflow Patterns
- ✔ Outside-Air Intake
- ✔ High/Low Ceiling Modes
- ✔ 3D i-see Sensor (Optional)
- ✔ Wi-Fi Control*1

2.2kW	2.5kW	3.5kW	4.2kW	5.0kW	6.0kW	7.1kW*2	10.0kW*2
-	-	-	-	-	-	✔	✔



MLZ-KP Series

- ✔ Slim Body
- ✔ Horizontal Airflow
- ✔ Auto Vane Control
- ✔ Multi-Flow Vane (Optimum Air Distribution)
- ✔ Wi-Fi Control*1
- ✔ Built-In Weekly Timer

2.2kW	2.5kW	3.5kW	4.2kW	5.0kW	6.0kW	7.1kW	8.0kW
-	✔	✔	-	✔	-	-	-



PCA-M Series

- ✔ Stylish Unit Design
- ✔ 32dBA Noise Level (M50)
- ✔ High/Low Ceiling Modes
- ✔ Outside-Air Intake
- ✔ Wi-Fi Control*1

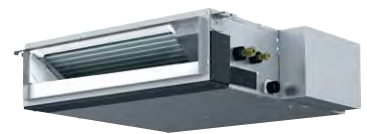
2.2kW	2.5kW	3.5kW	4.2kW	5.0kW*2	6.0kW*2	7.1kW*2	10.0kW*2
-	-	-	-	✔	✔	✔	✔



SEZ-M Series

- ✔ Compact Design
- ✔ Wi-Fi Control*1
- ✔ Unit height of only 200mm
- ✔ Three fan speeds and four static pressure levels

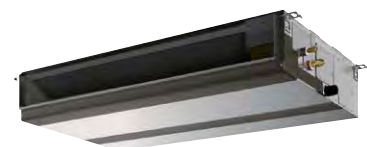
2.2kW	2.5kW	3.5kW	4.2kW	5.0kW	6.0kW	7.1kW	8.0kW
-	✔	✔	-	✔	✔	✔	-



PEAD-M Series

- ✔ Compact Design
- ✔ Lighter Weight
- ✔ Wi-Fi Control*1
- ✔ 30dBA Noise Level in 'Low Mode' (71)

2.2kW	2.5kW	3.5kW	4.2kW	5.0kW	6.0kW	7.1kW	10.0kW*2
-	-	-	-	✔	✔	✔	✔



*1 Optional Wi-Fi adapter required per unit.

*2 PLA-M71-100, PCA-M50-100 and PEAD-M100 are only connectable to PUMY outdoor units.

Indoor Units



MSZ-LN Series

- Capacity Range: 2.5/3.5/5.0kW
- Unit Dimensions (mm): 890 (W) x 233 (D) x 307 (H)
- Colour: Pearl White, Ruby Red and Onyx Black
- 3D i-see Sensor
- Vertical & Horizontal Swing
- Direct/Indirect Airflow

The LN Series is a wall mounted system that blends energy efficiency with a sleek and ultra modern design. The stylish design is available with a range of deep, rich colours like pearl white, ruby red and onyx black, resulting in a premium quality feel.

Plasma Quad Plus Filter

An advanced, multi-stage filter system designed to effectively reduce common allergens and bacteria and influenza virus ensuring the circulation of fresh, clean air back into the room.*1

Dual Split Vane Technology

The unique dual split vane design allows airflow to be customised to suit different areas of the room, by independently directing air up, down, left and right.

Built-In Wi-Fi*2 Control

Unlock the door to smarter heating and cooling, for total home comfort. View and control your air conditioner from anywhere in the world, set up schedules and get true two-way feedback.

*1 Testing Standard JEM1467:2015.

*2 Requires an internet connection and the App downloaded on your smartphone or tablet with the latest operation system available.





MSZ-EF Series

- Capacity Range: 2.2/2.5/3.5/4.2/5.0kW
- Unit Dimensions (mm): 895 (W) x 195 (D) x 299 (H)
- Colour: Natural White, Matte Silver and Glossy Black

The streamlined wall mounted indoor units have contemporary clean lines, expressing sophistication and quality, in a modern design. Available in 3 stylish colours natural white, matte silver and glossy black to provide the best match scenario for diverse interior designs.

Quiet Operation

The 'Quiet' fan speed setting ensures super quiet operation below 21dBA*¹. Perfect for the bedroom; it's so quiet you'll check to see if it's on.

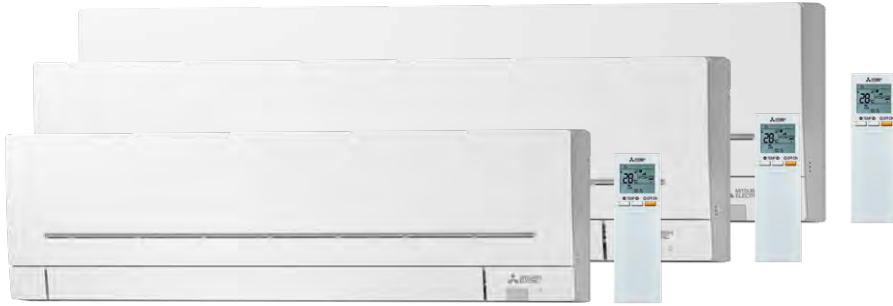
Nano Platinum Filter

The Nano Platinum Deodorising Filter reduces airborne bacteria while improving air quality. The optional Electrostatic Anti-Allergy Enzyme Filter assists in the reduction of common allergens.*²

Wireless Controller

A 7-day programmable wireless controller comes standard with the unit. It allows the user to set when the unit turns on/off and at which temperature setpoint it operates at different times of the day. This feature helps reduce power consumption without compromising comfort conditions.

*1 Models MSZ-EF25/35 only.
*2 Testing Standard JIS L1902.



MSZ-AP Series

- Capacity Range: 1.5/2.0/2.2/2.5/3.5/4.2/5.0/6.0/7.1/8.0kW*¹
- Unit Dimensions (mm):
 760 (W) x 178 (D) x 250 (H) (AP15-20)
 798 (W) x 219 (D) x 299 (H) (AP22-50)
 1,100 (W) x 257 (D) x 325 (H) (AP60-80)
- Colour: Natural White
- 7 vane and 7 louver selectable from the remote*²

The MSZ-AP Series is engineered for high performance and lower operating noise levels. It also features a streamlined design to blend in with decor.

Quiet Operation

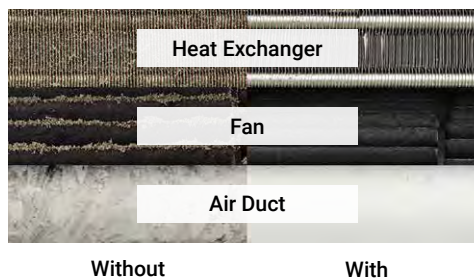
A 'Quiet Mode' setting has been added to the fan speed settings, ensuring super quiet operation. Perfect for the bedroom; it's so quiet you'll check to see if it's on. The MSZ-AP25 can achieve 18dBA for heating mode only.

Vertical & Horizontal Vanes*²

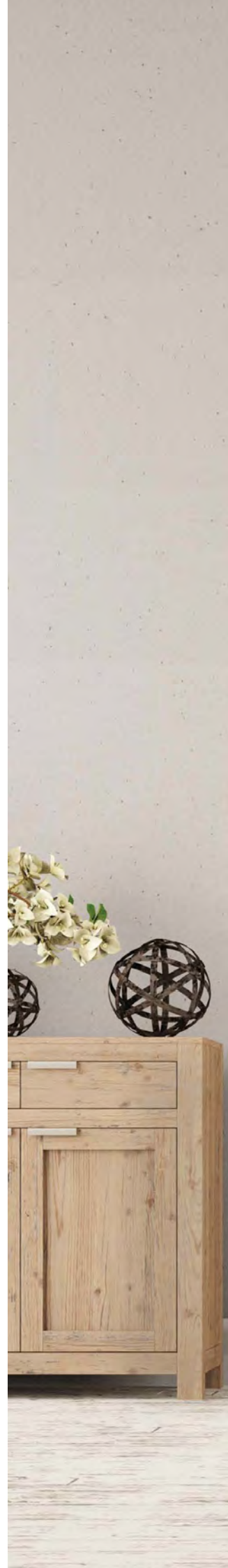
Vertical and horizontal vanes are double the size of the previous model, allowing the airflow direction to be adjusted and improving airflow control effectively. These functions can be activated at the touch of a button on your remote controller.

Dual Barrier Coating

The MSZ-AP Series has an advanced Dual Barrier Coating on its heat exchanger and facial surfaces that reduces dust and greasy dirt from adhering to it. This not only helps the unit stay cleaner for longer but also makes cleaning the unit easier. The image shows a simulated comparison of dirt over 10 years, with and without Dual Barrier Coating.



*¹ MSZ-AP60-80 are only connectable to MXZ outdoor units.
 *² Excludes MSZ-AP15-20.





MFXZ-KW Series

Floor Standing Unit

- Capacity Range: 2.5/3.5/5.0kW
- Unit Dimensions (mm): 750 (W) x 215 (D) x 600 (H)
- Colour: Pure White
- Quiet Operation (models 25/35)
- 19dBA Heating (models 25/35)

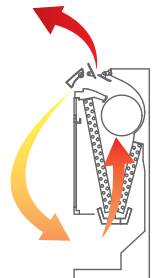
With their slimline design, our floor consoles are a great renovation option, fitting neatly into cavities of renovated fireplaces or heaters. The auto swing vane provides a more natural and comfortable airflow throughout the room.

Slim, Sophisticated Design

A contemporary slimline design that can be recessed into your wall to significantly reduce the indoor unit's depth from 215mm to 145mm - a 33% decrease. Also features a removable base, it is the ideal solution to provide compact, unobtrusive installation.

Rapid Heating Technology

KW Series ensures the perfect room temperature is reached faster with Rapid Heating Technology. Warm air is blown out in a downward direction and then sucked back into the unit to quickly raise the temperature of the air being blown out.



Multi Flow Vane

A powerful blower provides improved distribution of air from the upper and lower air outlets. The result is a comfortable environment with an even temperature throughout the room. Three uniquely shaped vanes control the airflow and allow the freedom to customise comfort according to preferences.





SLZ-M Series

Ceiling Compact Cassette

- Capacity Range: 2.5/3.5/5.0kW
- Unit Dimensions (mm): 570 (W) x 570 (D) x 245 (H)
- Colour: Pure White
- Multiple Vane Settings

Compact and quiet, our range of ceiling cassette systems are equipped with 4-way airflow control. They offer you the flexibility to keep your wall and floor space free without compromising on comfort. Comes with built-in drain pump.

Compact Design

A design that is a perfect match for ceilings made using 2ft x 2ft construction. The 4-way air outlet provides improved comfort with evenly distributed airflow.

Air Cleaning Filter

This built-in filter reduces dust and other particulates, keeping the air purified and deodorised. With simple maintenance, the long-life filter in the SLZ Series air conditioners can be used for approximately 2,500 hours.

3D i-see Sensor

Detects Occupants (Optional)

3D i-see Sensor detects the occupancy of people in the room and sets the air conditioning settings accordingly. This makes automatic power-saving operation possible in high traffic areas/places. Additionally, when the area is continuously unoccupied, the system switches to an enhanced power-saving mode.





PLA-M Series

Ceiling Cassette

- Capacity Range: 7.1/10.0kW*
- Unit Dimensions (mm): 840 (W) x 840 (D) x 258 (H)
- Colour: Natural White
- Automatic grille lowering (down to 4m) (Optional)

A ceiling cassette that features a modern style with a sleek finish designed to fit discreetly with contemporary interior design, and performance providing enhanced airflow distribution for optimal comfort. Comes with built-in drain pump.

Horizontal Airflow

The airflow control reduces that uncomfortable drafty feeling with the introduction of a horizontal airflow that spreads across the ceiling.

Wide Airflow

PLA-M Series ceiling cassettes have the capacity to circulate air evenly throughout a room, ensuring that the room temperature is consistent throughout the entire space, through the use of wide-angle outlets. PLA-M Series ceiling cassettes feature a 20% reduction in horizontal airflow and fan speed, when compared to conventional models, in order to increase the comfort experienced by occupants.

3D i-see Sensor

Detects Occupants (Optional)

3D i-see Sensor detects the occupancy of people in the room and sets the air conditioning settings accordingly. This makes automatic power-saving operation possible in high traffic areas/places. Additionally, when the area is continuously unoccupied, the system switches to an enhanced power-saving mode.

*PLA-M71-100 are only connectable to PUMY outdoor units.



MLZ-KP Series

Ceiling Cassette

- Capacity Range: 2.5/3.5/5.0kW
- Unit Dimensions (mm):
1,102 (W) x 360 (D) x 185 (H)
- Colour: Natural White
- Anti-Allergy Enzyme Filter (Optional)

The MLZ Series one-way ceiling cassette features a sharp, slim and sleek appearance. Comes with built-in drain pump.

Sleek, Slimline Design

At just 185mm in height, the MLZ Series is the perfect solution for low ceiling cavities, whilst the flat, natural white finish provides a sleek and discreet installation.

Auto Vane Control

Outlet vanes can be moved left and right, and up and down using the remote controller. This improved airflow control feature reduces drafts.

Set Airflow According to Ceiling Height

Dual-level airflow selection is engineered to accommodate specific ceiling heights. This is a key feature for adjusting airflow effectively when ceilings are of different heights.

Horizontal Airflow

The airflow control reduces that uncomfortable drafty feeling with the introduction of a horizontal airflow that distributes across the ceiling.



PCA-M Series

Ceiling Suspended

- Capacity Range: 5.0/6.0/7.1/10.0kW*
- Unit Dimensions (mm):
960 (W) x 680 (D) x 230 (H) (PCA-M50)
1,280 (W) x 680 (D) x 230 (H) (PCA-M60-71)
1,600 (W) x 680 (D) x 230 (H) (PCA-M100)
- Colour: Natural White
- Designed for schools, shops and restaurants

A stylish indoor unit design and airflow settings for both high and low ceiling interiors expand installation possibilities. Together with excellent energy-saving control options, these units are the solution to diversified air conditioning needs.

Equipped with Automatic Air-Speed Adjustment

In addition to the conventional 4-speed setting, units are now equipped with an automatic air-speed adjustment mode. This setting automatically adjusts the air-speed to conditions that match the room environment.

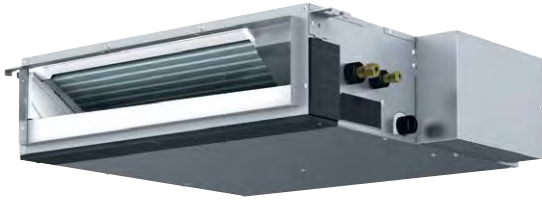
Equipped with High and Low Ceiling Modes

Units are equipped with high and low ceiling operation modes that make it possible to switch the airflow volume to match room height.

Outside-Air Intake

Units are equipped with a knock-out hole that enables the induction of fresh outside-air.

*PCA-M50-100 are only connectable to PUMY outdoor units.



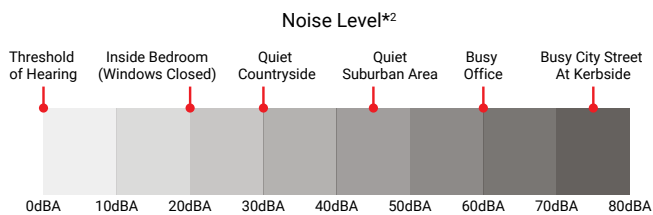
SEZ-M Series

Bulkhead

- Capacity Range: 2.5/3.5/5.0/6.0/7.1kW
- Unit Height: 200mm
- External Static Pressure: 5/15/35/50Pa
- Designed for homes, offices, restaurants and shops

Impressively Quiet

With the sound of rustling leaves measuring at 20dBA, the Mitsubishi Electric SEZ Series (25/35 models) offers impressively quiet operation at a hushed 23dBA*¹; ensuring a calm and comfortable environment.



*¹ The sound level for SEZ - is measured in an anechoic chamber, testing standard ISO 3745:2003.

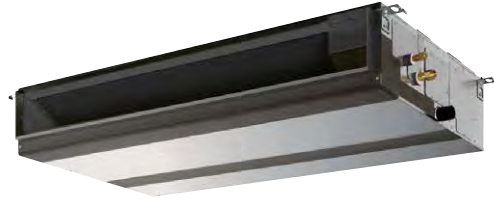
*² Source: NSW EPA.

DC Fan Motor

Efficiency of the DC motor is much higher than an equivalent AC motor. The closed type design conceals the electrical windings which increases safety.

Discreet Design

The compact design requires minimal space with a height of only 200mm, ideal for installation in buildings with lower ceilings. The design allows for discreet installation with the air intake and outlet grilles visible maintaining your home or office with clean lines for interior décor.



PEAD-M Series

Low Profile Mid-Static Ceiling Concealed

- Capacity Range: 5.0/6.0/7.1/10.0kW*³
- Unit Height: 250mm
- Lightweight for ease of installation
- Built-in condensate pump

For elegance and style, the PEAD Series compliments the room environment with an aesthetically pleasing ceiling installation and high-pressure static fan.

Compact Design

The height of the PEAD Series (5.0kW - 10.0kW) has been unified to 250mm making installation possible in low ceilings with minimal clearance space. It has variable airflow settings to establish the best operation to match different room layouts. The drainage pump lift is 700mm from the lower surface of the indoor units main body. The solution for low ceiling space, as low as 250mm.

Wide Selection of Fan Speeds and External Static Pressure

The PEAD Series has five-stage external static pressure conversions and three fan speed options, giving you flexibility in comfort options. PEAD Series is designed with human comfort in mind and can be installed in a wide range of building types with broad static pressures requirements ranging from 35 to 125Pa*⁴.

*³ PEAD-M100 are only connectable to PUMY outdoor units.

*⁴ Application dependent on site conditions.

Outdoor Units

MXZ Series

- Capacity Range: 5.2/5.4/7.1/8.0/10.0/12.0kW
- Guaranteed Operating Range: -10°C to 46°C (Cooling), -5°C (-15°C*) to 24°C (Heating)

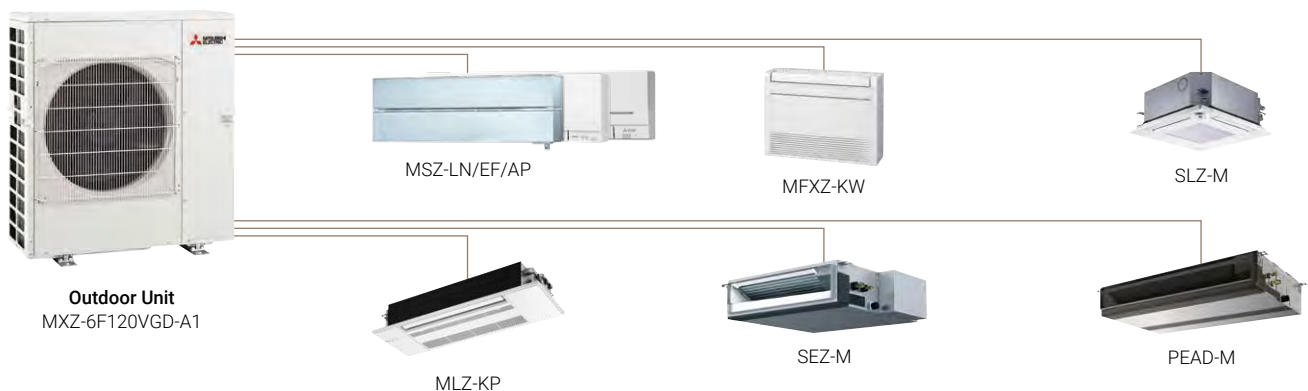
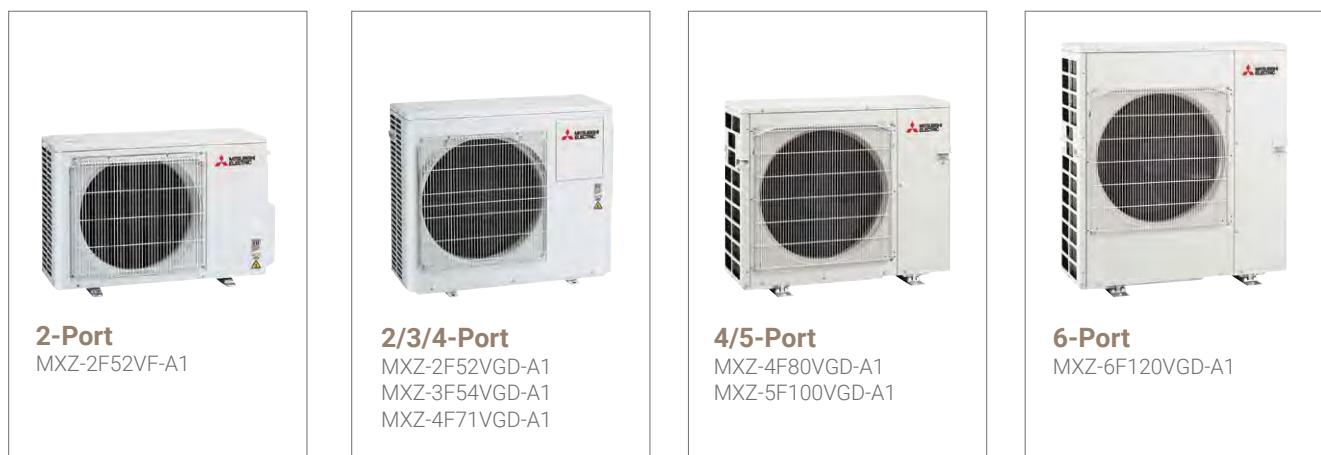
*Optional air protection guide is required where ambient temperature is lower than -5°C.

Operation Lock

To accommodate specific-use applications, cooling or heating operation can be specified when setting the control board of the outdoor unit. A convenient option when a system needs to be configured for exclusive cooling or heating service.

R32

R32 enables increased energy efficiency compared to R410A, with just one third of the global warming potential, the risk of environmental harm is greatly reduced.



PUMY Series

- Capacity Range: 9.0/12.5/14.0/15.5/22.4/28.0/33.5kW
- Single and Three Phase (P200/250/300 three phase only)
- Guaranteed Operating Range: Cooling at -5°C to 52°C, Heating at -20°C to 15°C

Mitsubishi Electric PUMY Series meets the needs of homes and apartments with the ability to select from a range of indoor units to best match your requirements.

Lightweight & Compact Size*

Compact design fits into narrow outdoor unit space of apartments and offices, with a reduced height of less than one metre. Lightweight design facilitates easier installation and transportation.

*PUMY-SP Series only.

Quiet Mode*

Noise level may be reduced up to 10dBA. This feature may assist in areas requiring sensitive ambient noise conditions.

*Capacity reduction differs by mode setting. PAC-SC36NA-E is required to activate Quiet Mode.

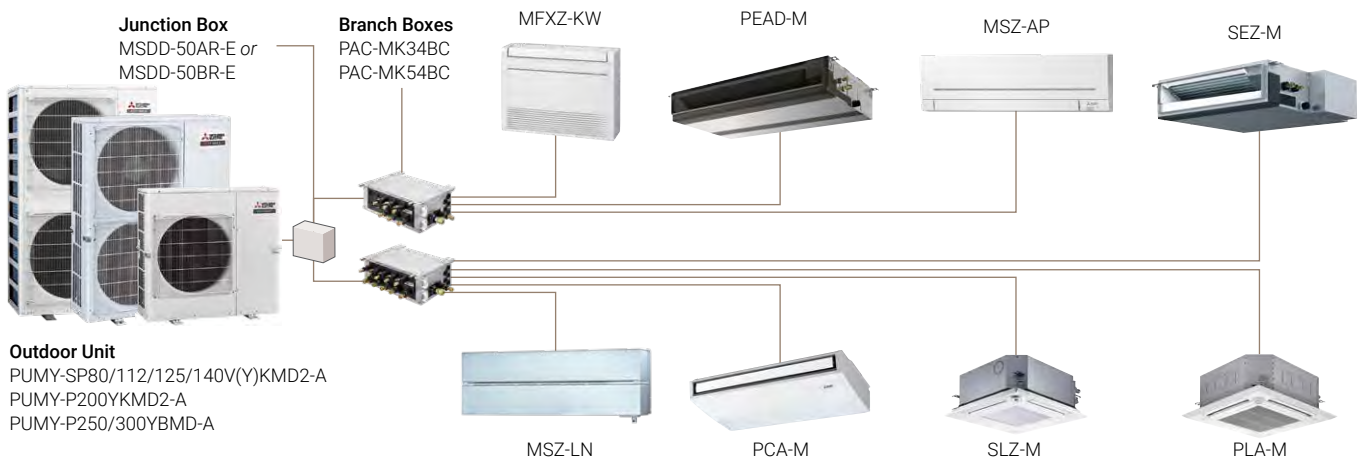
Highly Efficient Heat Exchanger

A high density and increase in surface area have improved the heat-exchange efficiency. The pipe diameter has changed from 9.52 to 7.94mm, resulting a high density heat exchanger.

External Static Pressure of 30Pa*

The installation location is flexible thanks to its 30Pa static pressure. Allowing the outdoor unit to be installed on balconies in high-rise buildings or spaces near louvers.

*Refer to installation manual for more details.



Indoor Unit Compatibility

Select from a Wide Range of Stylish Indoor Units

For an attractive installation and optimum use of indoor space, choose the system that best matches your needs including wall mounted, floor standing, ceiling cassette, ceiling suspended and ceiling concealed units, available in various capacities.









Refer to the following table to check if an indoor unit can be used with an outdoor unit. Combinations not listed in the table cannot be used.

MXZ Series																				
Model	Wall Mounted							Floor Standing		Ceiling Cassette				Ceiling Concealed						
	MSZ-LN		MSZ-EF	MSZ-AP			MFXZ-KW		SLZ-M		MLZ-KP		SEZ-M			PEAD-M				
Capacities	25/35	50	22/25/35/42/50	15/20/22/25/35/42/50	60	71	80	25/35	50	25/35	50	25/35	50	25/35	50	60	71	50	60	71
MXZ-2F52VF-A1	●		●	●				●		●		●		●						
MXZ-2F52VGD-A1	●		●	●				●		●		●		●						
MXZ-3F54VGD-A1	●	●	●	●				●	●	●	●	●	●	●	●				●	
MXZ-4F71VGD-A1	●	●	●	●	●			●	●	●	●	●	●	●	●	●			●	●
MXZ-4F80VGD-A1	●	●	●	●	●	●		●	●	●	●	●	●	●	●	●	●		●	●
MXZ-5F100VGD-A1	●	●	●	●	●	●		●	●	●	●	●	●	●	●	●	●		●	●
MXZ-6F120VGD-A1	●	●	●	●	●	●	●	●	●	●	●	●	●	●	●	●	●	●	●	●

PUMY Series																							
Model	Wall Mounted			Floor Standing		Ceiling Cassette					Ceiling Suspended				Ceiling Concealed								
	MSZ-LN		MSZ-EF	MSZ-AP	MFXZ-KW		SLZ-M		PLA-M	MLZ-KP		PCA-M				SEZ-M			PEAD-M				
Capacities	25/35	50	22/25/35/42/50	15/20/22/25/35/42/50	25/35	50	25/35	50	71	100	25/35	50	50	60	71	100	25/35	50	60	71	50/60/71	100	
PUMY-SP80V(Y)KMD2-A	●	●	●	●	●	●	●	●	●		●	●	●	●	●		●	●	●	●	●		
PUMY-SP112V(Y)KMD2-A	●	●	●	●	●	●	●	●	●	●	●	●	●	●	●	●	●	●	●	●	●	●	●
PUMY-SP125V(Y)KMD2-A	●	●	●	●	●	●	●	●	●	●	●	●	●	●	●	●	●	●	●	●	●	●	●
PUMY-SP140V(Y)KMD2-A	●	●	●	●	●	●	●	●	●	●	●	●	●	●	●	●	●	●	●	●	●	●	●
PUMY-P200YKMD2-A	●	●	●	●	●	●	●	●	●	●	●	●	●	●	●	●	●	●	●	●	●	●	●
PUMY-P250YBMD-A	●	●	●	●	●	●	●	●	●	●	●	●	●	●	●	●	●	●	●	●	●	●	●
PUMY-P300YBMD-A	●	●	●	●	●	●	●	●	●	●	●	●	●	●	●	●	●	●	●	●	●	●	●

Selection

Step 1		Select Indoor Units		
Select the indoor unit to be installed in each room.				
Wall Mounted	Floor Standing	Ceiling Cassette	Ceiling Suspended	Ceiling Concealed
 MSZ-LN  MSZ-EF  MSZ-AP	 MFZX-KW	 SLZ-M  PLA-M  MLZ-KP	 PCA-M	 SEZ-M  PEAD-M

Step 2		Select Outdoor Units	
2-Port Single Fan	2/3/4-Port Single Fan	2-8-Port Single Fan	
 MXZ-2F52VF-A1	 MXZ-2F52VGD-A1 MXZ-3F54VGD-A1 MXZ-4F71VGD-A1	 PUMY-SP80V(Y)KMD2-A PUMY-SP112V(Y)KMD2-A PUMY-SP125V(Y)KMD2-A PUMY-SP140V(Y)KMD2-A	 Branch Boxes* PAC-MK34BC PAC-MK54BC
4/5-Port Single Fan	6-Port Single Fan	2-8-Port Twin Fan	
 MXZ-4F80VGD-A1 MXZ-5F100VGD-A1	 MXZ-6F120VGD-A1	 PUMY-P200YKMD2-A PUMY-P250/300YBMD-A	 Branch Boxes* PAC-MK34BC PAC-MK54BC

*Branch box dependent on number of indoor units and capacity required.

Step 3		Check System Compatibility	
Possible combinations depends on the outdoor unit chosen. Please check the following points.			
<p>Check Indoor Units</p> <p>Refer to the Indoor Unit Compatibility Table (page 20) to check if the indoor units selected can be used with the outdoor unit selected. (Indoor units not listed in the table cannot be used.)</p>		<p>Check Indoor Units Capacity Combination</p> <p>Refer to the Combination Table on the website to check if the capacity combination of the indoor unit selected is connectable. (Combinations not listed cannot be connected.)</p>	
If the desired combination cannot be found, please change either the indoor or outdoor unit to match one of the combinations shown in the tables.			

Control your Comfort

Making the most out of your air conditioner all starts with the controls, helping you to create comfort levels that suit your needs. The availability of a wide variety of controls by Mitsubishi Electric Australia, not only provides you with a selection to personalise your air conditioning system, but also increases flexibility in the way you use your unit.

Wi-Fi CONTROL



Wi-Fi Control*1

Unlock the door to smarter heating and cooling systems through your Split and Ducted systems, for total home comfort. This innovative technology connects your Mitsubishi Electric air conditioner to your smartphone, tablet or online account, giving you the freedom to fully control each unit on-the-go via an internet connection from anywhere in the world.

Features:

- Adjusting set temperature
- Changing mode
- Fan speed
- Auto-Off
- Zone Control

Voice Control

Mitsubishi Electric air conditioning systems connected with Wi-Fi Control*1 are Amazon Alexa*2 and Google Assistant*3 enabled. This means you can enjoy hands-free control.

*1 Optional Wi-Fi adapter required per unit (excludes LN Series).

Requires an internet connection and the App downloaded on your smartphone or tablet with the latest operation system available.

*2 To use Amazon Alexa to control your air conditioner you will need an Amazon Alexa Echo device.

*3 To use Google Assistant to control your air conditioner you will need a Google Home Smart speaker.

Develop Operating Rules

Tailor your system to meet your specific needs and unlock the full potential of your air conditioner. Program your system to automatically turn On/Off at specific times, change settings, and develop temperature rules to ensure superior comfort day after day.

Control Multiple Units

Customise the settings of each air conditioner in your home. Purchase multiple adaptors to manage all air conditioners independently on the same account, to ensure complete control over your system. The result is a tailored system to your needs.





PAR-CT01MAA-PB

Bluetooth* Touch Screen Controller

PAR-CT01MAA-S/SB/PB

A full colour 3.5" touch LCD display suitable for both residential and commercial applications. Remote controller can communicate with smartphone or tablet device via Bluetooth Low Energy (BLE).

Features:

- Logo/photo image customisation
- White or Premium Black finishes
- 180 colour patterns available
- Customisable display
- Multilingual support: The smartphone app can be displayed in the language that the user's smartphone is set to

*Available for PAR-CT01MAA-SB and PAR-CT01MAA-PB.



PAR-41MAA

7 Day Wired Controller

PAR-41MAA

A large easy to read display with backlit LCD.

Features:

- Weekly timer – 8 patterns up to 7 days
- Auto-Off timer
- Temperature range restriction – Limit minimum and maximum to prevent over heating/cooling
- Operation lock
- Multi Language (EN/FR/DE/ES/IT/PT/SV/RU)



PAR-SL97A-E PAR-SL100A-E

Handheld Controllers

PAR-SL97A-E | PAR-SL100A-E

With an easy to read display and a variety of operating modes at the touch of a button. This controller features a weekly and 24 hour timer, On/Off timer to set operating times on a daily basis. The 'i-Save' mode recalls the preset temperature.

Features:

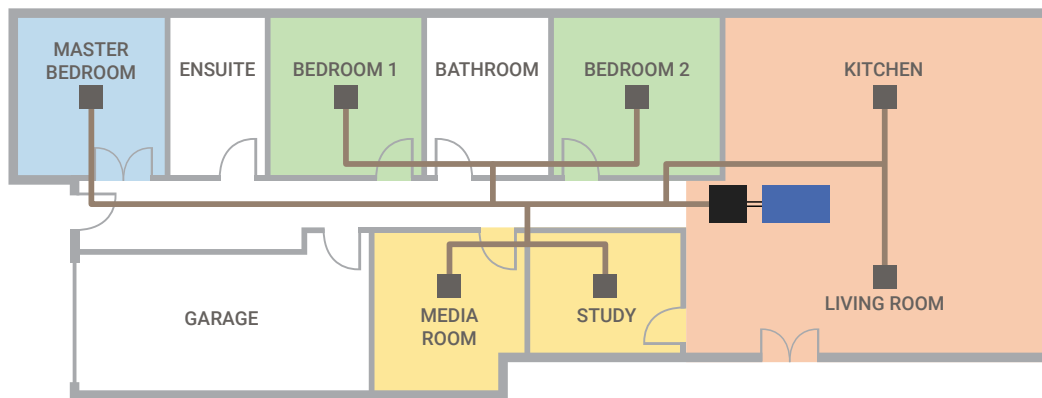
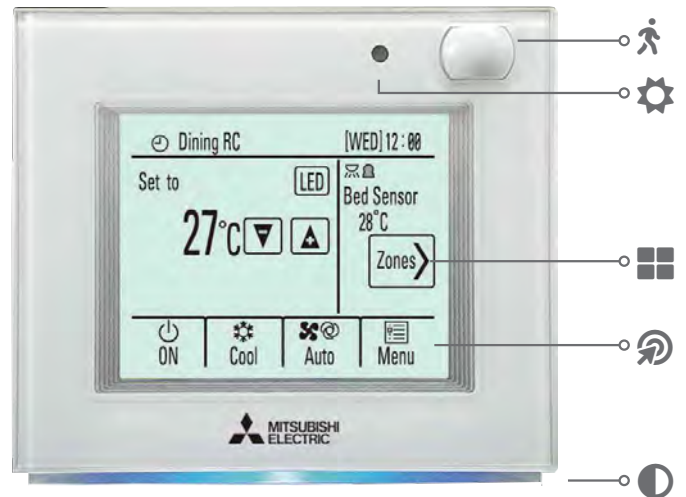
- 24 hour timer
- Mode and fan speed selection
- i-Save mode
- 3D i-See Sensor controller (PAR-SL100A-E only)

Zone Controller

What is Zoning?

Zoning is the ability to turn off a section of your ducted air conditioning system when not in use.

The Mitsubishi Electric Zone Controller expands functionality, delivering conditioned air where you want it in the home/office. With the ability of creating up to 4 or 8 separate zones, why condition air in unoccupied areas?



Occupancy Sensor

If motion is undetected the air conditioner switches to energy saving mode.

Brightness Sensor

Day and time settings can be combined with the brightness sensor to automatically turn the air conditioner off when lights are switched off.

Up to 4 or 8 Zones

The Zone Controller makes it possible to distribute conditioned air to where you need it in your home/office. With the ability of creating up to 4 or 8 separate zones. Unoccupied spaces can be prevented from receiving airflow, reducing power consumption in unnecessary areas.

Touch Panel

A 4.3" easy to use touch panel with backlight.

LED Indicator

A colour band indicates the operating mode or can be configured to other settings. i.e. Off/Temperature/Colour preference.

Weekly Timer

Zone Controller allows setting weekly schedule for unit On/Off, modes, set temperature and also zones On/Off. Up to eight operation patterns can be scheduled for each day.

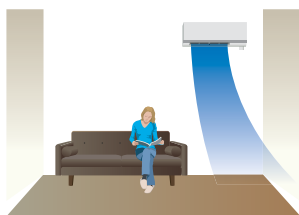
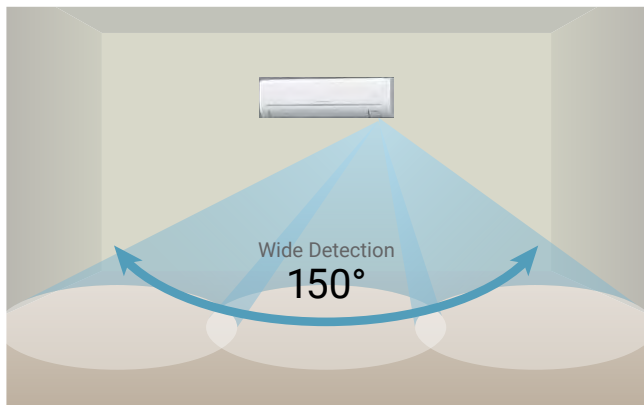
Averaging Sensor Control

Zone Controller allows having 4 sensors in the system. Control of the unit is based on averaging of the sensors of the active zone.

3D i-see Sensor

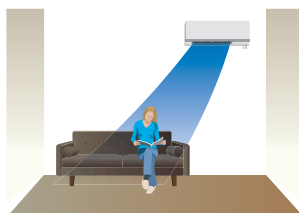
The 3D i-see Sensor is an infrared-ray sensor that measures the temperature at distant positions. While moving to the left and right, eight vertically arranged sensor elements analyse the room temperature in three dimensions.

This detailed analysis makes it possible to judge where people are in the room, thus allowing creation of features such as 'indirect airflow', to avoid airflow hitting people directly, and 'direct airflow' to deliver airflow to where people are.



Indirect Airflow

The indirect airflow setting can be used when the flow of air feels too strong or direct. For example, it can be used during cooling to avert airflow and prevent body temperature from becoming excessively cooled.

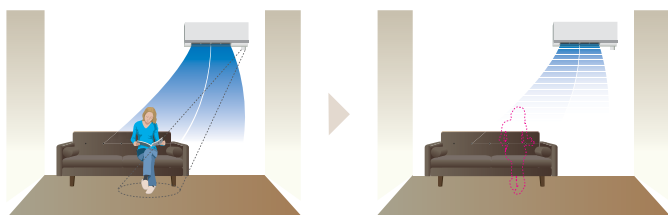


Direct Airflow

This setting can be used to directly target airflow at people such as for immediate comfort when coming indoors on a hot (cold) day.

Absence Detection

The sensor detects whether there are people in the room. When no-one is in the room, the unit automatically switches to energy-saving mode.



Demand Function*

With the connection of a demand response enabling device (DRED), Demand Response Mode is activated in response to signals sent from the electric power company at times when it is necessary to reduce peak demand.

*Excludes MXZ-2D52VA2.

Econo Cool Energy Saving Feature

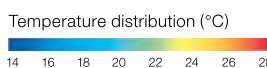
'Econo Cool' is an intelligent temperature control feature that adjusts the amount of air directed towards the body based on the air-outlet temperature. The setting temperature can be raised by as much as 2°C without any loss in comfort, thereby realising a gain in energy efficiency.

(Function only available during manual cooling operation).

	Conventional	Econo Cool
Ambient Temperature	35°C	35°C
Set Temperature	5°C	7°C
Perceived Temperature	30°C	29.3°C

A comfortable room environment is maintained even when setting the temperature 2°C higher than the conventional cooling mode.

Econo Cool On



Conventional Cooling Mode

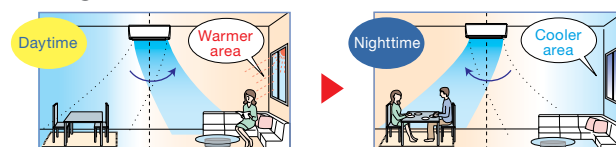


Area Temperature Monitor

The '3D i-see Sensor' monitors the whole room in sections and directs the airflow to areas of the room where the temperature does not match the temperature setting. For example when cooling the room, if the middle of the room is detected to be hotter, more airflow is directed towards it.

This helps to prevent unnecessary cooling/heating and contributes to energy efficiency.

Cooling Mode



Auto Vane

The vane closes automatically when the air conditioner is not running, concealing the air outlet and creating a flat surface that is aesthetically appealing.

Product Specifications Indoor Units

MSZ-LN Series (Wall Mounted)							
Indoor Unit		MSZ-LN25VG2V/B/R-A2		MSZ-LN35VG2V/B/R-A2		MSZ-LN50VG2V/B/R-A2	
Fan Speed		Quiet-Lo-Mid-Hi-SHi-Auto					
Cooling	Airflow [min-max]	L/s	78 - 207	78 - 217	95 - 232		
	Sound Pressure Level [min-max]	dBA	19 - 42	19 - 43	27 - 46		
Heating	Airflow [min-max]	L/s	75 - 232	75 - 232	90 - 262		
	Sound Pressure Level [min-max]	dBA	19 - 45	19 - 45	25 - 47		
Dimensions	Height	mm	307	307	307		
	Width	mm	890	890	890		
	Depth	mm	233	233	233		
Weight		kg	15.5	15.5	16.0		
Pipe Size [Liquid/Gas]		mm	ø6.35/ø9.52	ø6.35/ø9.52	ø6.35/ø9.52		

V: White, B: Black, R: Red

MSZ-EF Series (Wall Mounted)											
Indoor Unit		MSZ-EF22VG W/B/S-A1		MSZ-EF25VG W/B/S-A1		MSZ-EF35VG W/B/S-A1		MSZ-EF42VG W/B/S-A1		MSZ-EF50VG W/B/S-A1	
Fan Speed		Quiet-Lo-Mid-Hi-SHi-Auto									
Cooling	Airflow [min-max]	L/s	67 - 175	67 - 175	67 - 175	97 - 187	97 - 188				
	Sound Pressure Level [min-max]	dBA	19 - 42	19 - 42	21 - 42	28 - 43	30 - 43				
Heating	Airflow [min-max]	L/s	67 - 198	67 - 198	67 - 212	92 - 220	107 - 243				
	Sound Pressure Level [min-max]	dBA	21 - 45	21 - 45	21 - 46	28 - 48	30 - 49				
Dimensions	Height	mm	299	299	299	299	299				
	Width	mm	885	885	885	885	885				
	Depth	mm	195	195	195	195	195				
Weight		kg	11.5	11.5	11.5	11.5	11.5				
Pipe Size [Liquid/Gas]		mm	ø6.35/ø9.52	ø6.35/ø9.52	ø6.35/ø9.52	ø6.35/ø9.52	ø6.35/ø9.52	ø6.35/ø9.52			

W: White, B: Black, S: Silver

MSZ-AP Series (Wall Mounted)												
Indoor Unit		MSZ-AP15 VGD-A1	MSZ-AP20 VGD-A1	MSZ-AP22 VGD-A1	MSZ-AP25 VGD-A1	MSZ-AP35 VGD-A1	MSZ-AP42 VGD-A1	MSZ-AP50 VGD-A1	MSZ-AP60 VGD-A1	MSZ-AP71 VGD2-A1	MSZ-AP80 VGD2-A1	
Fan Speed		Lo-Mid-Hi										
Cooling	Airflow [min-max]	L/s	58 - 107	58 - 115	82 - 205	82 - 205	82 - 223	90 - 223	100 - 258	156 - 315	170 - 310	170 - 343
	Sound Pressure Level [min-max]	dBA	21 - 40	21 - 42	19 - 44	19 - 44	19 - 45	26 - 49	28 - 49	29 - 48	30 - 49	30 - 53
Heating	Airflow [min-max]	L/s	62 - 113	62 - 122	82 - 190	82 - 190	82 - 215	88 - 233	93 - 268	180 - 338	133 - 320	133 - 320
	Sound Pressure Level [min-max]	dBA	21 - 40	21 - 42	18 - 42	18 - 42	19 - 45	26 - 46	28 - 48	30 - 48	30 - 51	30 - 51
Dimensions	Height	mm	250	250	299	299	299	299	299	325	325	325
	Width	mm	760	760	798	798	798	798	798	1100	1100	1100
	Depth	mm	178	178	219	219	219	219	219	257	257	257
Weight		kg	8.2	8.2	10.5	10.5	10.5	10.5	10.5	16.0	17.0	17.0
Pipe Size [Liquid/Gas]		mm	ø6.35/ø9.52	ø6.35/ø9.52	ø6.35/ø9.52	ø6.35/ø9.52	ø6.35/ø9.52	ø6.35/ø9.52	ø6.35/ø12.70	ø6.35/ø12.70	ø6.35/ø12.70	ø6.35/ø12.70

MFZX-KW Series (Floor Standing)							
Indoor Unit		MFZX-KW25VG-A1		MFZX-KW35VG-A1		MFZX-KW50VG-A1	
Fan Speed		Quiet-Lo-Mid-Hi-SHi-Auto					
Cooling	Airflow [min-max]	L/s	70 - 150	70 - 150	93 - 205		
	Sound Pressure Level [min-max]	dBA	23 - 43	23 - 43	28 - 48		
Heating	Airflow [min-max]	L/s	70 - 162	70 - 162	100 - 233		
	Sound Pressure Level [min-max]	dBA	24 - 44	24 - 44	29 - 49		
Dimensions	Height	mm	600	600	600		
	Width	mm	750	750	750		
	Depth	mm	215	215	215		
Weight		kg	14.5	14.5	14.5		
Pipe Size [Liquid/Gas]		mm	ø6.35/ø9.52	ø6.35/ø9.52	ø6.35/ø12.70		

SLZ-M Series (Ceiling Compact Cassette)					
Indoor Unit			SLZ-M25FA-A	SLZ-M35FA-A	SLZ-M50FA-A
Fan Speed			Lo-Mid-Hi		
Cooling	Airflow [Lo-Mid-Hi]	L/s	108 - 125 - 142	108 - 150 - 192	117 - 150 - 192
	Sound Pressure Level [Lo-Mid-Hi]	dBA	25 - 28 - 31	25 - 33 - 39	27 - 34 - 39
Heating	Airflow [Lo-Mid-Hi]	L/s	108 - 125 - 142	108 - 150 - 192	117 - 150 - 192
	Sound Pressure Level [Lo-Mid-Hi]	dBA	25 - 28 - 31	25 - 33 - 39	27 - 34 - 39
Dimensions (Panel)	Height	mm	245 (10)	245 (10)	245 (10)
	Width	mm	570 (625)	570 (625)	570 (625)
	Depth	mm	570 (625)	570 (625)	570 (625)
Weight (Panel)		kg	15 (3)	15 (3)	15 (3)
Pipe Size [Liquid/Gas]		mm	ø6.35/ø9.52	ø6.35/ø9.52	ø6.35/ø12.70

PLA-M Series (Ceiling Cassette)					
Indoor Unit			PLA-M71EA-A	PLA-M100EA-A	
Fan Speed			Lo-Mid-Hi		
Cooling	Airflow [min-max]	L/s	267 - 350	317 - 483	
	Sound Pressure Level [min-max]	dBA	28 - 34	31 - 40	
Heating	Airflow [min-max]	L/s	267 - 350	317 - 483	
	Sound Pressure Level [min-max]	dBA	28 - 34	31 - 40	
Dimensions (Panel)	Height	mm	258 (40)	298 (40)	
	Width	mm	840 (950)	840 (950)	
	Depth	mm	840 (950)	840 (950)	
Weight (Panel)		kg	21 (5)	24 (5)	
Pipe Size [Liquid/Gas]		mm	ø9.52/ø15.88	ø9.52/ø15.88	

MLZ-KP Series (Ceiling Cassette)					
Indoor Unit			MLZ-KP25VF-A1	MLZ-KP35VF-A1	MLZ-KP50VF-A1
Fan Speed			Quiet-Lo-Med-Hi		
Cooling	Airflow [min-max]	L/s	100 - 147	100 - 157	100 - 190
	Sound Pressure Level [min-max]	dBA	27 - 38	27 - 40	29 - 47
Heating	Airflow [min-max]	L/s	100 - 153	100 - 165	100 - 197
	Sound Pressure Level [min-max]	dBA	26 - 37	26 - 40	26 - 48
Dimensions (Panel)	Height	mm	185 (24)	185 (24)	185 (24)
	Width	mm	1102 (1200)	1102 (1200)	1102 (1200)
	Depth	mm	380 (424)	380 (424)	380 (424)
Weight (Panel)		kg	15.5 (3.5)	15.5 (3.5)	15.5 (3.5)
Pipe Size [Liquid/Gas]		mm	ø6.35/ø9.52	ø6.35/ø9.52	ø6.35/ø12.70

PCA-M Series (Ceiling Suspended)						
Indoor Unit			PCA-M50KA	PCA-M60KA	PCA-M71KA	PCA-M100KA
Fan Speed			Lo-Mi1-Mi2-Hi			Lo-Mid-Hi
Cooling	Airflow [min-max]	L/s	167 - 250	250 - 317	267 - 333	367 - 467
	Sound Pressure Level [min-max]	dBA	32 - 40	33 - 40	35 - 41	37 - 43
Heating	Airflow [min-max]	L/s	167 - 250	250 - 317	267 - 333	367 - 467
	Sound Pressure Level [min-max]	dBA	32 - 40	33 - 40	35 - 41	37 - 43
Dimensions	Height	mm	230	230	230	230
	Width	mm	960	1280	1280	1600
	Depth	mm	680	680	680	680
Weight		kg	26	32	32	37
Pipe Size [Liquid/Gas]		mm	ø6.35/ø12.70	ø6.35/ø15.88	ø9.52/ø15.88	ø9.52/ø15.88

No remote controller included.

Product Specifications Indoor Units

SEZ-M Series (Bulkhead)							
Indoor Unit			SEZ-M25DA (L)	SEZ-M35DA (L)	SEZ-M50DA (L)	SEZ-M60DA (L)	SEZ-M71DA (L)
Fan Speed			Lo-Mid-Hi				
Cooling	Airflow [min-max]	L/s	92 - 150	117 - 183	167 - 250	200 - 300	200 - 333
	Sound Pressure Level [min-max] @ 5 Pa	dBA	22 - 29	23 - 33	29 - 36	29 - 37	29 - 39
Heating	Airflow [min-max]	L/s	92 - 150	117 - 183	167 - 250	200 - 300	200 - 333
	Sound Pressure Level [min-max] @ 5 Pa	dBA	22 - 29	23 - 33	29 - 36	29 - 37	29 - 39
Static Pressure			Pa	5/15/35/50	5/15/35/50	5/15/35/50	5/15/35/50
Dimensions		Height	mm	200	200	200	200
		Width	mm	790	990	990	1190
		Depth	mm	700	700	700	700
Weight			kg	17.5	21.0	22.0	25.5
Pipe Size [Liquid/Gas]			mm	ø6.35/ø9.52	ø6.35/ø9.52	ø6.35/ø12.70	ø6.35/ø15.88

SEZ-M DA: No remote controller included.

SEZ-M DAL: Equipped with a wireless remote controller.

PEAD-M Series (Ceiling Concealed)						
Indoor Unit			PEAD-M50JAAD	PEAD-M60JAAD	PEAD-M71JAAD	PEAD-M100JAAD
Fan Speed			Lo-Mid-Hi			
Cooling	Airflow [Lo-Mid-Hi]	L/s	200 - 242 - 283	242 - 300 - 350	292 - 350 - 417	400 - 483 - 567
	Sound Pressure Level [Lo-Mid-Hi] @ 50 Pa	dBA	30 - 35 - 39	30 - 33 - 37	30 - 34 - 39	33 - 38 - 42
Heating	Airflow [Lo-Mid-Hi]	L/s	200 - 242 - 283	242 - 300 - 350	292 - 350 - 417	400 - 483 - 567
	Sound Pressure Level [Lo-Mid-Hi] @ 50 Pa	dBA	30 - 35 - 39	30 - 33 - 37	30 - 34 - 39	33 - 38 - 42
Static Pressure			Pa	35/50/70/100/125	35/50/70/100/125	35/50/70/100/125
Dimensions		Height	mm	250	250	250
		Width	mm	900	1100	1100
		Depth	mm	732	732	732
Weight			kg	27	30	39
Return Air Spigot Size			mm	858 x 210	1058 x 210	1358 x 210
Supply Air Spigot Size			mm	860 x 178	1060 x 178	1360 x 178
Pipe Size [Liquid/Gas]			mm	ø6.35/ø12.70	ø6.35/ø15.88	ø9.52/ø15.88

No remote controller included.

Note: With PEAD Series, the total capacity of indoor units need to be 100% of the outdoor unit capacity as maximum.

Outdoor Units

Series			MXZ						
Outdoor Unit			MXZ-2F52 VF-A1	MXZ-2F52 VGD-A1	MXZ-3F54 VGD-A1	MXZ-4F71 VGD-A1	MXZ-4F80 VGD-A1	MXZ-5F100 VGD-A1	MXZ-6F120 VGD-A1
Refrigerant			R32						
Power Supply (V, Phase, Hz)			220 V, single, 60 Hz / 230 V, single, 50 Hz						
Cooling	Capacity [Min-Rated-Max]	kW	1.1 - 5.2 - 5.6	2.0 - 5.2 - 6.0	2.9 - 5.4 - 6.8	3.7 - 7.1 - 8.8	3.7 - 8.0 - 9.2	3.9 - 10.0 - 11.0	3.5 - 12.0 - 14.0
	Total Input [Rated]	kW	1.38	1.38	1.25	1.79	1.98	2.84	3.3
	AEER/EER		3.72/3.77	3.73/3.77	4.26/4.32	3.93/3.97	4.00/4.04	3.49/3.52	3.61/3.64
	Running Current [Rated]	A	6.5 - 6.3	6.4 - 6.1	5.8 - 5.5	8.3 - 7.9	9.1 - 8.7	13.0 - 12.5	15.2 - 14.5
	Sound Pressure Level	dBA	46	46	46	48	49	52	53
Heating	Capacity [Min-Rated-Max]	kW	1.0 - 6.1 - 7.0	1.8 - 6.1 - 7.2	2.6 - 7.0 - 9.0	3.4 - 8.0 - 10.7	3.4 - 8.8 - 11.6	4.1 - 10.0 - 14.0	3.5 - 13.2 - 16.5
	Total Input [Rated]	kW	1.49	1.45	1.43	1.67	1.68	2.07	3
	ACOP/COP		4.05/4.09	4.17/4.21	4.84/4.90	4.74/4.79	5.18/5.24	4.78/4.83	4.37/4.40
	Running Current [Rated]	A	7.1 - 6.7	6.7 - 6.4	6.6 - 6.3	7.7 - 7.4	7.7 - 7.4	9.5 - 9.1	13.8 - 13.2
	Sound Pressure Level	dBA	50	50	50	54	51	56	57
Max. Running Current		A	12.2	12.2	18	18	21.4	21.4	29.8
Breaker Size		A	15	15	25	25	25	25	32
Dimensions [HxWxD]		mm	550 x 800 x 285	710 x 840 x 330	710 x 840 x 330	710 x 840 x 330	796 x 950 x 330	796 x 950 x 330	1048 x 950 x 330
Weight		kg	37	57	58	59	61	62	87
Pre-Charge Refrigerant		kg	1.0	2.4	2.4	2.4	2.4	2.4	2.4
Piping	Diameter [Gas/Liquid]	mm	9.52 x 2 / 6.35 x 2	9.52 x 2 / 6.35 x 2	9.52 x 3 / 6.35 x 3	9.52 x 3 + 12.7 x 1 / 6.35 x 4	9.52 x 3 + 12.7 x 1 / 6.35 x 4	9.52 x 4 + 12.7 x 1 / 6.35 x 5	9.52 x 5 + 12.7 x 1 / 6.35 x 6
	Max. Length [Total-Each]	m	30 - 20	40 - 20	50 - 25	60 - 25	70 - 25	80 - 25	80 - 25
	Max. Height	m	15 / 10*	15 / 10*	15 / 10*	15 / 10*	15	15	15
Guaranteed Operating Range [Outdoor]		Cooling °C D.B.	-10 ~ 46	-10 ~ 46	-10 ~ 46	-10 ~ 46	-10 ~ 46	-10 ~ 46	-10 ~ 46
		Heating °C W.B.	-15 ~ 24	-15 ~ 24	-15 ~ 24	-15 ~ 24	-15 ~ 24	-15 ~ 24	-15 ~ 24

Maximum Piping Length (Total Length)						
Model	30m	40m	50m	60m	70m	80m
MXZ-2F52VF-A1	✓					
MXZ-2F52VGD-A1		✓				
MXZ-3F54VGD-A1			✓			
MXZ-4F71VGD-A1				✓		
MXZ-4F80VGD-A1					✓	
MXZ-5F100VGD-A1						✓
MXZ-6F120VGD-A1						✓

Rating Conditions:

Cooling: Indoor 27°C, D.B./19°C, W.B. Outdoor 35°C, D.B./24°C, W.B.

Heating: Indoor 20°C, D.B./15°C, W.B. Outdoor 7°C, D.B./6°C, W.B.

*If the outdoor unit is installed higher than the indoor unit, maximum height is reduced to 10m.

Product Specifications Outdoor Units

Series			PUMY-SP (Single Fan)			
Outdoor Unit			PUMY-SP80VKMD2-A	PUMY-SP112VKMD2-A	PUMY-SP125VKMD2-A	PUMY-SP140VKMD2-A
Power Source			VKMD2: 1-phase 220-230-240 V, 50 Hz; 1-phase 220 V, 60 Hz			
Cooling	Capacity [Nominal] ^{*1,7}	kW	9.0	12.5	14.0	15.5
	Power Input	kW	2.11	3.10	3.84	4.31
	Current Input	A	9.79 - 9.36 - 8.97	14.38 - 13.75 - 13.18	17.81 - 17.04 - 16.33	19.99 - 19.12 - 18.32
	EER		4.27	4.03	3.65	3.54
	AEER		3.35	3.31	3.29	3.40
	Temp. Range	Indoor Outdoor	W.B. D.B.	15°C ~ 24°C -5°C ~ 52°C ^{*3,4}	15°C ~ 24°C -5°C ~ 52°C ^{*3,4}	15°C ~ 24°C -5°C ~ 52°C ^{*3,4}
Heating	Capacity [Nominal] ^{*2,8}	kW	10.0	14.0	16.0	16.5
	Power Input	kW	2.27	3.17	3.90	4.02
	Current Input	A	10.53 - 10.07 - 9.65	14.70 - 14.06 - 13.48	18.09 - 17.30 - 16.58	18.65 - 17.83 - 17.09
	COP		4.41	4.42	4.10	4.10
	ACOP		3.62	3.72	3.56	3.55
	Temp. Range	Indoor Outdoor	W.B. D.B.	15°C ~ 27°C -20°C ~ 15°C	15°C ~ 27°C -20°C ~ 15°C	15°C ~ 27°C -20°C ~ 15°C
Indoor Unit Connectable	Total Capacity	50% to 130% of outdoor unit capacity				
	Model/Quantity	P10 - P100/9	P10 - P140/12	P10 - P140/12	P10 - P140/12	
Sound Pressure Level [Measured in Anechoic Room]	dB(A)	51/54	52/54	53/56	54/56	
Piping	Liquid/Gas	mm	ø9.52/ø15.88	ø9.52/ø15.88	ø9.52/ø15.88	ø9.52/ø15.88
	Piping Length	m	7.5	7.5	7.5	7.5
Fan	Type x Quantity		Propeller fan x 1	Propeller fan x 1	Propeller fan x 1	Propeller fan x 1
	Airflow Rate	m ³ /min	75	77/75	81/81	81/81
		L/s	1250	1283/1250	1350/1383	1350/1383
		cfm	2649	2719	2931	2931
	Control, Driving Mechanism		DC control	DC control	DC control	DC control
	Motor Output	kW	0.20 x 1	0.20 x 1	0.20 x 1	0.20 x 1
External Static Pressure	Pa	0/30 ^{*5}	0/30 ^{*5}	0/30 ^{*5}	0/30 ^{*5}	
Compressor	Type x Quantity	Twin rotary hermetic compressor x 1				
	Manufacturer	Mitsubishi Electric Corporation				
	Starting Method	Inverter	Inverter	Inverter	Inverter	
	Motor Output	kW	1.5	2.2	2.5	3.1
Lubricant		FV50S (1.4 litre)	FV50S (1.4 litre)	FV50S (1.4 litre)	FV50S (1.4 litre)	
External Finish	Galvanised steel sheet munsell no. 3Y 7.8/1.1					
External Dimension [HxWxD]	mm	981 x 1050 x 330 (+25)	981 x 1050 x 330 (+25)	981 x 1050 x 330 (+25)	981 x 1050 x 330 (+25)	
Protection Devices	High Pressure Protection	High pressure switch				
	Inverter Circuit [Comp./Fan]	Overcurrent detection, overheat detection (heat sink thermistor)				
	Compressor	Compressor thermistor, overcurrent detection				
Refrigerant	Fan Motor	Overheating, voltage protection				
	Type x Original Charge	R410A x 3.5 kg	R410A x 3.5 kg	R410A x 3.5 kg	R410A x 3.5 kg	
Control		Electronic expansion valve	Electronic expansion valve	Electronic expansion valve	Electronic expansion valve	
Net Weight	kg	93 ^{*6}	93 ^{*6}	93 ^{*6}	93 ^{*6}	
Heat Exchanger		Cross fin and copper tube	Cross fin and copper tube	Cross fin and copper tube	Cross fin and copper tube	
HIC Circuit [HIC: Heat Inter-Changer]		HIC circuit	HIC circuit	HIC circuit	HIC circuit	
Defrosting Method		Reversed refrigerant circuit	Reversed refrigerant circuit	Reversed refrigerant circuit	Reversed refrigerant circuit	
Optional Parts	Joint: CMY-Y62-G-E Header: CMY-Y64/68-G-E					

Notes:

- *1, *2 Nominal conditions (subject to ISO 15042).
- *3 10°C to 52°C: when connecting following models: PEFY-P15/20/25/32/40VMX-E1, PKFY-P10/15/20/25/32VLM, PFFY-P20/25/32VLE(R)M, PFFY-P20/25/32VKM, and M Series, S Series and P Series type indoor unit with branch box.
- *4 -15°C to 52°C: when using an optional air protect guide [PAC-SH95AG-E]. However, this condition does not apply to the indoor unit listed in *3.
- *5 It is possible to set the External static pressure o 30 Pa by dip switch.
- *6 94 kg for PUMY-P80/112/125/140VKMD2-BS.

Rating Conditions:

- *7 Cooling: Indoor 27°C, D.B./19°C, W.B. Outdoor 35°C, D.B./24°C, W.B.
- *8 Heating: Indoor 20°C, D.B./15°C, W.B. Outdoor 7°C, D.B./6°C, W.B.

Series			PUMY-SP (Single Fan)				
Outdoor Unit			PUMY-SP80YKMD2-A	PUMY-SP112YKMD2-A	PUMY-SP125YKMD2-A	PUMY-SP140YKMD2-A	
Power Source			YKMD2: 3-phase 380-400-415 V, 50 Hz; 3-phase 380 V, 60 Hz				
Cooling	Capacity [Nominal] ^{*1,7}		kW	9.0	12.5	14.0	15.5
	Power Input		kW	2.11	3.10	3.84	4.38
	Current Input		A	3.37 - 3.21 - 3.09	4.96 - 4.71 - 4.54	6.14 - 5.83 - 5.62	6.89 - 6.55 - 6.31
	EER			4.27	4.03	3.65	3.60
	AEER			3.35	3.31	3.29	3.40
	Temp. Range	Indoor	W.B.	15°C ~ 24°C	15°C ~ 24°C	15°C ~ 24°C	15°C ~ 24°C
Outdoor		D.B.	-5°C ~ 52°C ^{*3,4}	-5°C ~ 52°C ^{*3,4}	-5°C ~ 52°C ^{*3,4}	-5°C ~ 52°C ^{*3,4}	
Heating	Capacity [Nominal] ^{*2,8}		kW	10.0	14.0	16.0	16.5
	Power Input		kW	2.27	3.17	3.90	4.02
	Current Input		A	3.63 - 3.45 - 3.32	5.07 - 4.82 - 4.64	6.24 - 5.93 - 5.71	6.43 - 6.11 - 5.89
	COP			4.41	4.42	4.10	4.10
	ACOP			3.62	3.72	3.56	3.55
	Temp. Range	Indoor	W.B.	15°C ~ 27°C	15°C ~ 27°C	15°C ~ 27°C	15°C ~ 27°C
Outdoor		D.B.	-20°C ~ 15°C	-20°C ~ 15°C	-20°C ~ 15°C	-20°C ~ 15°C	
Indoor Unit Connectable	Total Capacity		50% to 130% of outdoor unit capacity				
	Model/Quantity		P10 - P100/9	P10 - P140/12	P10 - P140/12	P10 - P140/12	
Sound Pressure Level [Measured in Anechoic Room]		dBA	51/54	52/54	53/56	54/56	
Piping	Liquid/Gas		mm	ø9.52/ø15.88	ø9.52/ø15.88	ø9.52/ø15.88	
	Pipe Length		m	7.5	7.5	7.5	
Fan	Type x Quantity			Propeller fan x 1	Propeller fan x 1	Propeller fan x 1	
	Airflow Rate		m ³ /min	75	77/75	81/83	
			L/s	1250	1283/1250	1350/1383	
			cfm	2649	2719	2931	
	Control, Driving Mechanism			DC control	DC control	DC control	
Motor Output		kW	0.20 x 1	0.20 x 1	0.20 x 1		
Compressor	Type x Quantity		Twin rotary hermetic compressor x 1				
	Manufacturer		Mitsubishi Electric Corporation				
	Starting Method		Inverter	Inverter	Inverter	Inverter	
	Motor Output		kW	1.6	2.1	2.5	
External Finish			Galvanised steel sheet munsell No. 3Y 7.8/1.1				
External Dimension [HxWxD]		mm	981 x 1050 x 330 (+25)	981 x 1050 x 330 (+25)	981 x 1050 x 330 (+25)	981 x 1050 x 330 (+25)	
Protection Devices	High Pressure Protection		High pressure switch				
	Inverter Circuit [Comp./Fan]		Overcurrent detection, overheat detection (heat sink thermistor)				
	Compressor		Compressor thermistor, overcurrent detection				
	Fan Motor		Overheating, voltage protection				
Refrigerant	Type x Original Charge		R410A x 3.5 kg	R410A x 3.5 kg	R410A x 3.5 kg	R410A x 3.5 kg	
	Control		Electronic expansion valve	Electronic expansion valve	Electronic expansion valve	Electronic expansion valve	
Net Weight		kg	94 ^{*6}	94 ^{*6}	94 ^{*6}	94 ^{*6}	
Heat Exchanger			Cross fin and copper tube	Cross fin and copper tube	Cross fin and copper tube	Cross fin and copper tube	
HIC Circuit [HIC: Heat Inter-Changer]			HIC circuit	HIC circuit	HIC circuit	HIC circuit	
Defrosting Method			Reversed refrigerant circuit	Reversed refrigerant circuit	Reversed refrigerant circuit	Reversed refrigerant circuit	
Optional Parts			Joint: CMY-Y62-G-E Header: CMY-Y64/68-G-E				

Notes:

- *1, *2 Nominal conditions (subject to ISO 15042).
- *3 10°C to 52°C: when connecting following models: PEFY-P15/20/25/32/40VMX-E1, PKFY-P10/15/20/25/32VLM, PFFY-P20/25/32VLE(R)M, PFFY-P20/25/32VKM, and M Series, S Series and P Series type indoor unit with branch box.
- *4 -15°C to 52°C: when using an optional air protect guide [PAC-SH95AG-E]. However, this condition does not apply to the indoor unit listed in *3.
- *5 It is possible to set the External static pressure to 30 Pa by dip switch.
- *6 95 kg for PUMY-P80/112/125/140YKMD2-BS.

Rating Conditions:

- *7 Cooling: Indoor 27°C, D.B./19°C, W.B.
Outdoor 35°C, D.B./24°C, W.B.
- *8 Heating: Indoor 20°C, D.B./15°C, W.B.
Outdoor 7°C, D.B./6°C, W.B.

Product Specifications Outdoor Units

Series			PUMY-P (Twin Fan)					
Outdoor Unit			PUMY-P200YKMD2-A	PUMY-P250YBMD-A	PUMY-P300YBMD-A			
Power Source			YKMD2/YBMD: 3-phase 380-400-415 V, 50 Hz; 3-phase 380 V, 60 Hz					
Cooling	Capacity [Nominal] ^{*1, *10}		kW	22.4	28.0	33.5		
	Power Input		kW	6.22	6.83	8.17		
	Current Input		A	10.16 - 9.65 - 9.30	11.16 - 10.60 - 10.22/11.16	13.35 - 12.68 - 12.22/13.35		
	EER			3.60	4.10	4.10		
	Temp. Range	Indoor	W.B.	15°C ~ 24°C	15°C ~ 24°C	15°C ~ 24°C		
Outdoor		D.B.	-5°C ~ 52°C ^{*3}	-5°C ~ 52°C ^{*4, *5}	-5°C ~ 52°C ^{*4, *5}			
Heating	Capacity [Nominal] ^{*2, *11}		kW	25.0	31.5	37.5		
	Power Input		kW	6.00	6.06	7.36		
	Current Input		A	9.80 - 9.31 - 8.98	9.90 - 9.41 - 9.07/9.90	12.02 - 11.42 - 11.01/12.02		
	COP			4.17	5.20	5.10		
	Temp. Range	Indoor	W.B.	15°C ~ 27°C	15°C ~ 27°C	15°C ~ 27°C		
Outdoor		D.B.	-20°C ~ 15°C	-20°C ~ 15°C	-20°C ~ 15°C			
Indoor Unit Connectable	Total Capacity			50% to 130% of outdoor unit capacity	50% to 130% of outdoor unit capacity	50% to 130% of outdoor unit capacity		
	Model/Quantity	Mixed system	CITY MULTI		P15 - P200/12	P15 - P250/21	P15 - P250/25	
			Branch Box		P15 - P100/8	P25 - P71/12	P25 - P71/12	
			Branch box 1 unit	CITY MULTI		P10 - P200/5	P15 - P250/16	P15 - P250/16
				Branch box		P15 - P100/5	P25 - P71/5	P25 - P71/5
				Total (Quantity)		10	21	25
			Branch box 2 units	CITY MULTI		P10 - P200/3	P15 - P250/11	P15 - P250/15
				Branch box		P15 - P100/8	P25 - P71/10	P25 - P71/10
				Total (Quantity)		11	21	25
			Branch box 3 units	CITY MULTI		N/A	P15 - P250/9	P15 - P250/13
Branch box				N/A	P25 - P71/12	P25 - P71/12		
Total (Quantity)		N/A	21	25				
Sound Pressure Level [Measured in Anechoic Room]		dBA	57/61	59/60	60/62			
Piping [Liquid/Gas]		mm	ø9.52 ^{*6} /ø19.05	ø9.52 ^{*7} /ø22.20	ø12.70/ø25.40			
Fan	Type x Quantity			Propeller fan x 2	Propeller fan x 2	Propeller fan x 2		
	Airflow Rate	m ³ /min	134	187 (cooling)/183 (heating)	187 (cooling)/197 (heating)			
		L/s	2233	3117 (cooling)/3050 (heating)	3117 (cooling)/3283 (heating)			
		cfm	4732	6603 (cooling)/6462 (heating)	6603 (cooling)/6956 (heating)			
	Motor Output	kW	0.20 + 0.20	0.375 x 2	0.375 x 2			
External Static Pressure	Pa	0	0/30 ^{*8}	0/30 ^{*8}				
Compressor	Type x Quantity		Pa	Scroll hermetic compressor x 1	Scroll hermetic compressor x 1	Scroll hermetic compressor x 1		
	Starting Method			Inverter	Inverter	Inverter		
	Motor Output		kW	4.07	6.30	7.23		
External Finish			Galvanised steel sheet Munsell no. 3Y 7.8/1.1					
External Dimension [HxWxD]		mm	1338 x 1050 x 330 (+25)	1662 x 1050 x 460 (+45)	1662 x 1050 x 460 (+45)			
Protection Devices	High Pressure Protection			High pressure switch	High pressure switch	High pressure switch		
	Inverter Circuit [Comp./Fan]		Overcurrent detection, Overheat detection (Heat sink thermistor)					
	Compressor		Compressor thermistor, Over current detection, Compressor protector					
	Fan Motor			Overheating, voltage protection	Overheating, voltage protection	Overheating, voltage protection		
Refrigerant		Type x Original Charge	R410A x 7.3 kg	R410A x 9.3 kg	R410A x 9.3 kg			
Net Weight		kg	138 ^{*9}	192 ^{*9}	192 ^{*9}			
Heat Exchanger			Cross fin and copper tube					
HIC Circuit [HIC: Heat Inter-Changer]			Double pipe heat exchanger					
Defrosting Method			Reversed refrigerant circuit					
Optional Parts	Air protection guide		PAC-SH95AG-E	PAC-SK21AG-E	PAC-SK21AG-E			
	Air outlet guide		PAC-SH96SG-E	PAC-SK22SG-E	PAC-SK22SG-E			

Notes:

- *1, *2 Nominal conditions (subject to ISO 15042).
- *3 10°C to 52°C: when connecting following models: PKFY-P10/15/20/25/32VLM-E, PFFY-P20/25/32VKM, PFFY-P20/25/32VLEM, PFFY-P20/25/32VLRM(M), and M Series, S Series and P Series type indoor unit.
- *4 10°C to 52°C: when connecting following models: PKFY-P15/20/25/32VLM, PFFY-P20/25/32VKM, PFFY-P20/25/32VCM, PFFY-P20/25/32VLEM, PFFY-P50/63VMA3-E, and M Series and S Series type indoor unit.
- *5 -15°C to 52°C: when using an optional air protect guide (PAC-SK21AG-E). However, this condition does not apply to the indoor unit listed in *4.
- *6 Liquid pipe diameter: 12.7 mm, when further piping length is longer than 60 m, or the farthest length of main pipe between outdoor unit and branch box is longer than 20 m in branch box system.
- *7 Liquid pipe diameter: 12.7 mm, when further piping length is longer than 90 m, and when PEFY-P200 or P250 is connected.
- *8 It is possible to set the External static pressure to 30 Pa by dip switch.
- *9 139 kg for PUMY-P200YKMD2-A-BS. 194 kg for PUMY-P250/300YBMD-A-BS.

Rating Conditions:

- *10 Cooling: Indoor 27°C, D.B./19°C, W.B.
Outdoor 35°C, D.B./24°C, W.B.
- *11 Heating: Indoor 20°C, D.B./15°C, W.B.
Outdoor 7°C, D.B./6°C, W.B.

Optional Parts Indoor Units

		Anti-Allergy Enzyme Filter		Electrostatic Anti-Allergy Enzyme Filter		Deodorising Filter	High-Efficiency Filter Element				Filter Box		Soft-Dry Cloth	3D I-see Sensor Corner Panel		Shutter Plate	Multi-Functional Casement	Outside-Air Intake Duct Flange	Space Panel	Drain Pump						
		MAC-408FT-E	MAC-2350FT-E	MAC-2310FT	MAC-2320FT	MAC-3010FT-E	PAC-SH59KF-E	PAC-SH88KF-E	PAC-SH89KF-E	PAC-SH90KF-E	PAC-KE93TB-E	PAC-KE94TB-E	MAC-1001CL-E	PAC-SF1ME-E	PAC-SE1ME-E	PAC-SJ37SP-E	PAC-SJ41TM-E	PAC-SH650F-E	PAC-SF280F-E	PAC-SJ65AS-E	PAC-SJ92DM-E	PAC-SJ93DM-E	PAC-SJ94DM-E	PAC-KE07DM-E		
M Series	Wall Mounted	MSZ-LN25VG2V/B/R-A2				●						●														
		MSZ-LN35VG2V/B/R-A2					●						●													
		MSZ-LN50VG2V/B/R-A2					●						●													
		MSZ-LN60VG2V/B/R-A2					●						●													
		MSZ-EF22VGW/B/S-A1				●							●													
		MSZ-EF25VGW/B/S-A1				●							●													
		MSZ-EF35VGW/B/S-A1				●							●													
		MSZ-EF42VGW/B/S-A1				●							●													
		MSZ-EF50VGW/B/S-A1				●							●													
		MSZ-AP15VGD-A1																								
		MSZ-AP20VGD-A1																								
		MSZ-AP22VGD-A1	●			●																				
		MSZ-AP25VGD-A1	●			●																				
		MSZ-AP35VGD-A1	●			●																				
		MSZ-AP42VGD-A1	●			●																				
		MSZ-AP50VGD-A1	●			●																				
		MSZ-AP60VGD-A1		●	●																					
		MSZ-AP71VGD-A1		●	●																					
	MSZ-AP80VGD-A1		●	●																						
	Floor Standing	MFZX-KW25VG-A1	●			●																				
MFZX-KW35VG-A1		●			●																					
MFZX-KW50VG-A1		●			●																					
Ceiling Cassette	MLZ-KP25VF-A1	●			●																					
	MLZ-KP35VF-A1	●			●																					
	MLZ-KP50VF-A1	●			●																					
S Series	Ceiling Cassette	SLZ-M25FA-A											●													
		SLZ-M35FA-A											●													
		SLZ-M50FA-A											●													
		SLZ-M60FA-A											●													
	Ceiling Concealed	SEZ-M25DA(L)																					●			
SEZ-M35DA(L)																						●				
SEZ-M50DA(L)																						●				
SEZ-M60DA(L)																						●				
SEZ-M71DA(L)																						●				
P Series	Ceiling Cassette	PLA-M71EA-A					●						●	●	●	●		●								
		PLA-M100EA-A					●						●	●	●	●	●		●							
		PLA-M125EA-A					●						●	●	●	●	●	●		●						
		PLA-M140EA-A					●						●	●	●	●	●	●	●		●					
	Ceiling Suspended	PCA-M50KA						●													●					
		PCA-M60KA							●														●			
		PCA-M71KA							●														●			
		PCA-M100KA								●													●			
	Ceiling Concealed	PEAD-M71JAAD											●													
		PEAD-M100JAAD											●													

Optional Parts Indoor Units

Indoor Unit		Option																				
		Decorative Cover		System Control Interface	MA & Contact Terminal Interface	Wi-Fi Interface	Connector Cable		Power Supply Terminal Kit			Wired Remote Controller		Wireless Remote Controller								
		PAC-SF81KC-E	MAC-334IF-E	MAC-397IF-E	MAC-568IF-E	MAC-1702RA-E	MAC-1710RA-E	PAC-SG96HR-E	PAC-SG97HR-E	PAC-SJ39HR-E	PAR-41MAA	PAC-YT52ORA	PAR-SL97A-E	Wireless Remote Controller	Signal Receiver			Controller Kit (Sender & Receiver)	Remote Sensor	Remote On/Off Adapter		Connector Cable for Remote Display
													PAR-SL100A-E	PAR-SA9CA-E	PAR-SF9FA	PAR-SE9FA-E	PAR-SL94B-E	PAC-SE41TS-E	PAC-SE55RA-E	PAC-SF40RM-E	PAC-SA88HA-E	
M Series	Wall Mounted	MSZ-LN25VG2V/B/R-A2		●	●		●	●			●*2	●*2										
		MSZ-LN35VG2V/B/R-A2		●	●		●	●			●*2	●*2										
		MSZ-LN50VG2V/B/R-A2		●	●		●	●			●*2	●*2										
		MSZ-LN60VG2V/B/R-A2		●	●		●	●			●*2	●*2										
		MSZ-EF22VGW/B/S-A1		●	●	●	●	●			●*2	●*2										
		MSZ-EF25VGW/B/S-A1		●	●	●	●	●			●*2	●*2										
		MSZ-EF35VGW/B/S-A1		●	●	●	●	●			●*2	●*2										
		MSZ-EF42VGW/B/S-A1		●	●	●	●	●			●*2	●*2										
		MSZ-EF50VGW/B/S-A1		●	●	●	●	●			●*2	●*2										
		MSZ-AP15VGD-A1		●	●	●	●	●			●*2	●*2										
		MSZ-AP20VGD-A1		●	●	●	●	●			●*2	●*2										
		MSZ-AP22VGD-A1		●	●	●	●	●			●*2	●*2										
		MSZ-AP25VGD-A1		●	●	●	●	●			●*2	●*2										
		MSZ-AP35VGD-A1		●	●	●	●	●			●*2	●*2										
		MSZ-AP42VGD-A1		●	●	●	●	●			●*2	●*2										
		MSZ-AP50VGD-A1		●	●	●	●	●			●*2	●*2										
	MSZ-AP60VGD-A1		●	●	●	●	●			●*2	●*2											
	MSZ-AP71VGD-A1		●	●	●	●	●			●*2	●*2											
	MSZ-AP80VGD-A1		●	●	●	●	●			●*2	●*2											
Floor Standing	MFXZ-KW25VG-A1		●	●	●	●			●*2	●*2												
	MFXZ-KW35VG-A1		●	●	●	●			●*2	●*2												
	MFXZ-KW50VG-A1		●	●	●	●			●*2	●*2												
Ceiling Cassette	MLZ-KP25VF-A1		●	●	●	●			●*2	●*2												
	MLZ-KP35VF-A1		●	●	●	●			●*2	●*2												
	MLZ-KP50VF-A1		●	●	●	●			●*2	●*2												
S Series	Ceiling Cassette	SLZ-M25FA-A		●	●	●			●	●	●	●*5		●			●	●	●*6	●		
		SLZ-M35FA-A		●	●	●			●	●	●	●*5		●			●	●	●*6	●		
		SLZ-M50FA-A		●	●	●			●	●	●	●*5		●			●	●	●*6	●		
	Ceiling Concealed	SEZ-M25DA(L)		●	●	●				●*3	●*3	●		●			●	●	●*6	●		
		SEZ-M35DA(L)		●	●	●				●*3	●*3	●		●			●	●	●*6	●		
		SEZ-M50DA(L)		●	●	●				●*3	●*3	●		●			●	●	●*6	●		
		SEZ-M60DA(L)		●	●	●				●*3	●*3	●		●			●	●	●*6	●		
SEZ-M71DA(L)		●	●	●				●*3	●*3	●		●			●	●	●*6	●				
P Series	Ceiling Cassette	PLA-M71EA-A		●*1	●*1	●			●	●	●	●*5			●		●	●	●*6	●		
		PLA-M100EA-A		●*1	●*1	●			●	●	●	●*5			●		●	●	●*6	●		
	Ceiling Suspended	PCA-M50KA		●*1	●*1	●		●		●	●	●					●	●	●*6	●		
		PCA-M60KA		●*1	●*1	●		●		●	●	●					●	●	●*6	●		
		PCA-M71KA		●*1	●*1	●		●		●	●	●					●	●	●*6	●		
		PCA-M100KA		●*1	●*1	●		●		●	●	●					●	●	●*6	●		
Ceiling Concealed	PEAD-M71JAAD		●*1	●*1	●		●		●	●	●		●			●	●	●*6	●			
	PEAD-M100JAAD		●*1	●*1	●		●		●	●	●		●			●	●	●*6	●			

*1 P Series indoor units can be used in combination with SUZ or MXZ outdoor units.
 *2 MAC-334IF-E or MAC-397IF-E is required.

*3 Excluding SEZ-VAL.
 *4 PAC-SH29TC-E is required.

*5 Group control cannot be used.
 *6 Unable to use with wireless remote controller.

Optional Parts Outdoor Units

Option Outdoor Unit	Joint Pipe						Air Outlet Guide	Drain Socket	
	Unit Ø9.52 Pipe Ø15.88	Unit Ø6.35 Pipe Ø9.52	Unit Ø9.52 Pipe Ø12.70	Unit Ø12.70 Pipe Ø9.52	Unit Ø12.70 Pipe Ø15.88				
	Flare								
	PAC-SG76RJ-E	PAC-493PI	MAC-A454JP-E	MAC-A455JP-E	MAC-A456JP-E	MAC-889SG	MAC-856SG	PAC-SH96SG-E	PAC-SG60DS-E
MXZ Series	MXZ-2F52VF-A1			●			●		
	MXZ-2F52VGD-A1			●				●	
	MXZ-3F54VGD-A1			●				●	
	MXZ-4F71VGD-A1	●	●	●	●	●		●	
	MXZ-4F80VGD-A1	●	●	●	●	●			●
	MXZ-5F100VGD-A1	●	●	●	●	●			●
	MXZ-6F120VGD-A1	●	●	●	●	●			●

Option Outdoor Unit	Joint Pipe						Air Outlet Guide	Air Protection Guide	2 Branch Pipe (Joint)	Drain Socket		
	Unit Ø9.52 Pipe Ø15.88	Unit Ø6.35 Pipe Ø9.52	Unit Ø9.52 Pipe Ø12.70	Unit Ø12.70 Pipe Ø9.52	Unit Ø12.70 Pipe Ø15.88	Branch Box Outdoor Cover						
	Flare											
	PAC-SG76RJ-E	PAC-493PI	MAC-A454JP-E	MAC-A455JP-E	MAC-A456JP-E	PAC-AK350CVR-E	PAC-SH96SG-E	PAC-SK22SG-E	PAC-SH95SG-E	PAC-SK21AG-E	CMY-Y62-G-E	PAC-SG61DS-E
PUMY Series	PUMY-SP80V(Y)KMD2-A						●		●		●	●
	PUMY-SP112V(Y)KMD2-A						●		●		●	●
	PUMY-SP125V(Y)KMD2-A						●		●		●	●
	PUMY-SP140V(Y)KMD2-A						●		●		●	●
	PUMY-P200YKMD2-A						●		●		●	●
	PUMY-250/300YBMD-A							●		●		
	PAC-MK34BC	●	●	●	●	●						
	PAC-MK54BC	●	●	●	●	●						

The products of Mitsubishi Electric Australia come with guarantees, additional to this Warranty, that cannot be excluded under the Australian Consumer Law. You are entitled to a replacement or refund for a major failure and for compensation for any other reasonably foreseeable loss or damage. You are also entitled to have the goods repaired or replaced if the goods fail to be of acceptable quality and failure does not amount to a major failure.



See website for full
Terms and Conditions

MULTI2023_SEPT13

Products in this brochure contain refrigerant R32 and R410A. Please refer to the specifications before installation and servicing of these products. The purchaser must ensure that the person and/or companies are suitably licensed and experienced are permitted to install, service and repair the air conditioners. Suitable access for warranty and service is required. Specifications, designs and other content appearing in this brochure is current at the time of printing, and is subject to change without notice. Images are representational for illustration purposes. Printed: September 2023.

For more information contact
www.mitsubishielectric.com.au
Call 1300 722 228

Distributed and guaranteed throughout Australia by
MITSUBISHI ELECTRIC AUSTRALIA PTY. LTD.
(Incorporated in New South Wales) A.B.N. 58 001 215 792